

PROPOSED COUNTY ROAD R.O.W.  
LOT 1  
5.00 ACRES±

LOT 2  
6.00 ACRES±

LOT 3  
5.00 ACRES±

BLOCK I  
JOY HAVEN SUB.  
15.00 ACRES±

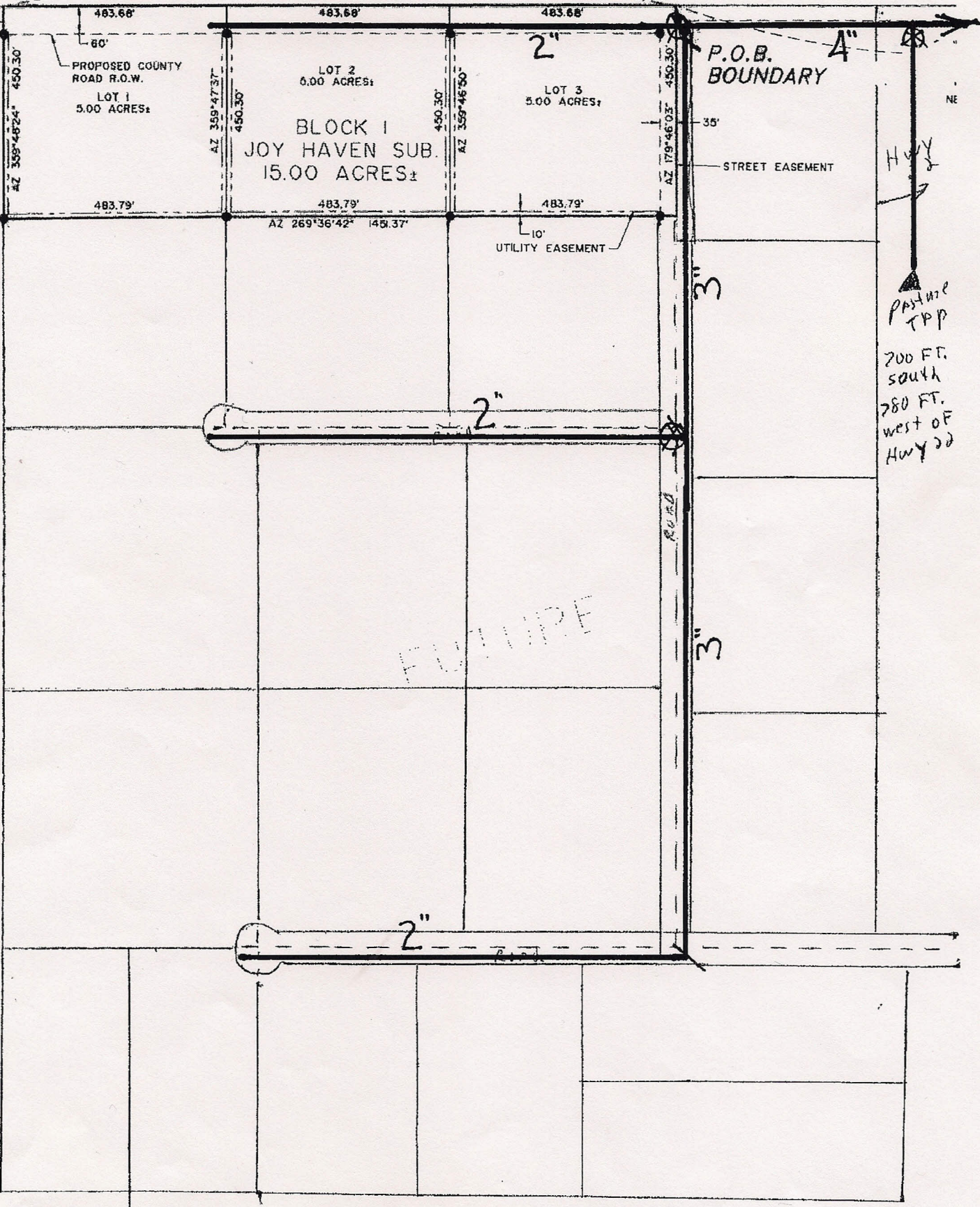
P.O.B.  
BOUNDARY

STREET EASEMENT

UTILITY EASEMENT

FUTURE

PASTURE TRP  
200 FT. SOUTH  
280 FT. WEST OF  
Hwy 22



483.68'

483.68'

483.68'

AZ 359°47'37\"

AZ 359°47'37\"

450.30'

AZ 359°46'50\"

450.30'

AZ 179°46'03\"

450.30'

483.79'

483.79'

483.79'

AZ 269°36'42\"

145.37'

10'

35'

3'

2\"

2\"

3'

4\"

NE